



CUS-9618C

Trolley Ultrasound Scanner

Features

- Wide clinic applications: abdomen, obstetric, gynecology, cardiology, urology, endocavity, vascular, prostate, and small parts
- Application of FPGA & SMT, brief circuits with reliable performance
- Application of wide band transducer technology satisfies different requirements
- USB2.0 interface for real-time image transfer to PC
- 12" flicker-free SVGA monitor, backlit silicon-gel keyboard
- Option workstation software and acupuncture bracket

CUS-9618C

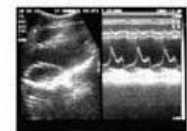
Trolley Ultrasound Scanner

Specifications

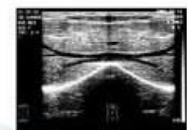
- Scanning mode: electronic convex/linear/micro-convex array
- Display modes: B, B+B, B+M, M, 4B
- Scanner depth: 200mm
- Gray scale: 256
- TGC: adjustable 8 levels
- Image magnification: x1.0, x1.2, x1.5, x2.0
- Cine-loop: 409 frames
- Image storage: 32 frames
- Image conversion: up/down, left/right, black/whit
- Local zoom: 2(can be used at frozen/real-time)
- Frame correlation: selectable 3 levels
- Depth shift: 16 levels
- Body marks: 40
- Video output: PAL-D, VGA
- Measurement: distance, girth, area, volume, heart rate, pregnant week, fetal weight, EDD
- OB table: BPD, GS, CRL, FL, AD, HC, AC, EDD, GA, FW
- Comments: real-time clock, date, scanning depth, model of probes, parameter of frame correlation, combination of focus, patient's ID, gender, age
- Power supply: 220V±10% 50 Hz/AC110V±10% 60Hz
- Weight: 55kgs(including probe)
- Dimension: 658x415x1065mm
- Available Probes: 2.5/3.5/5.0 convex probe(standard)
5.0/7.5MHz linear probe(option)
5.0/6.5MHz transvaginal probe(option)
3.5/5.0MHz micro-convex probe(option)
5.0/7.5Mhz endorectal probe(option)



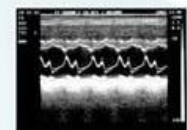
Liver



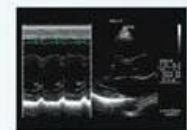
Heart



Contrast liver



Heart rate



Fetus heart rate



Fetus



7.5MHz Linear



20R/5.0MHz Micro-Convex



13R/6.5MHz Transvaginal Convex



7.5MHz Endorectal Linear



0123

